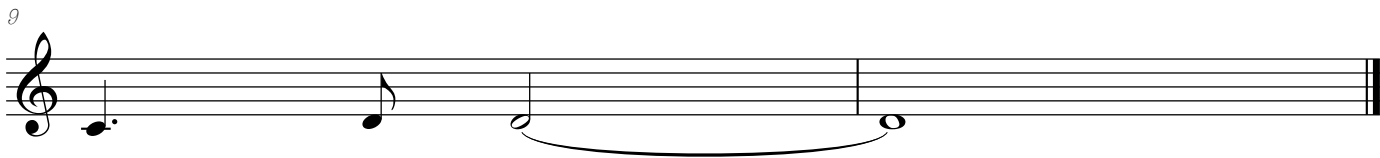
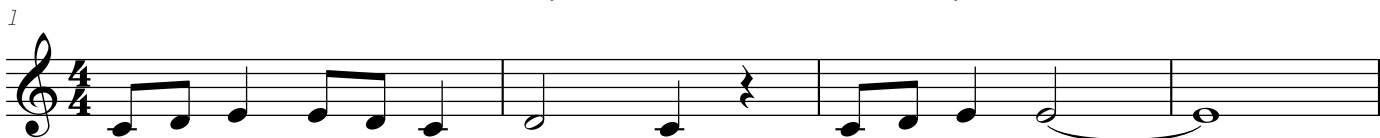


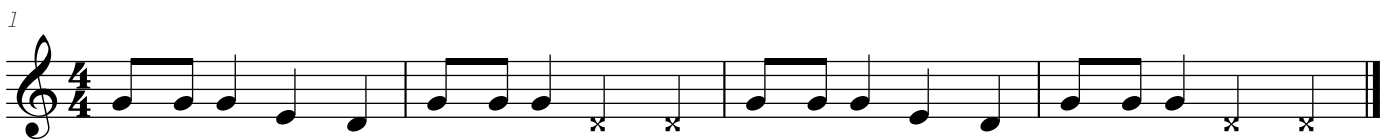
Trumpet
BAND SONGS 2015
We Will Rock You



Peanuts (Charlie Brown Theme)



Here We Go!



Here we go Red Sox, Here we go! *stomp stomp* Here we go Red Sox, Here we go! *stomp stomp*

Let's Go Band



The Hey Song

1

5

Musical notation for 'The Hey Song' in 4/4 time, starting with a treble clef. The first staff begins with a measure number '1'. The melody consists of quarter and eighth notes with rests. The second staff begins with a measure number '5' and continues the melody, ending with a double bar line.

Louie Louie

1

Musical notation for 'Louie Louie' in 4/4 time, starting with a treble clef. The first staff begins with a measure number '1'. The melody features a repeating eighth-note pattern. The piece concludes with a double bar line and a fermata over the final note.

Another One Bites the Dust

1

Musical notation for 'Another One Bites the Dust' in 4/4 time, starting with a treble clef. The first staff begins with a measure number '1'. The melody is characterized by a steady eighth-note rhythm. The piece ends with a double bar line and a repeat sign.

Smoke On the Water

1

Musical notation for 'Smoke On the Water' in 4/4 time, starting with a treble clef. The first staff begins with a measure number '1'. The melody features a mix of quarter and eighth notes. The piece concludes with a double bar line and a repeat sign.

Iron Man

Musical notation for 'Iron Man' in 4/4 time, starting with a treble clef. The melody is primarily composed of eighth notes. The piece concludes with a double bar line and a repeat sign.

Trumpet

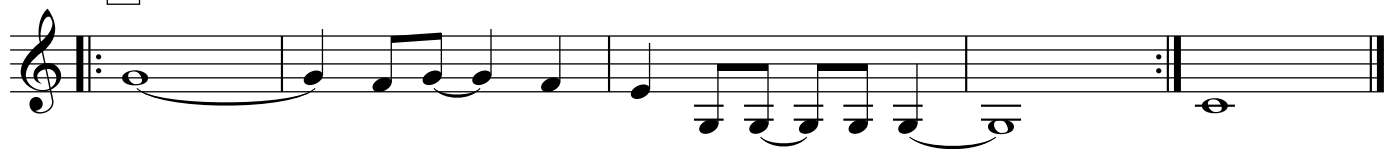
In the Jungle



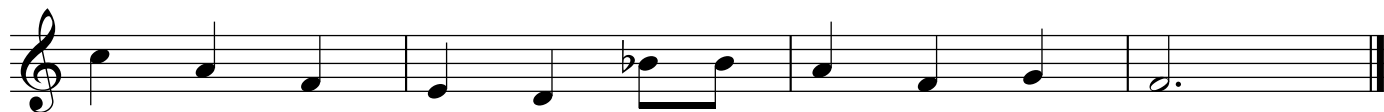
A



B



Happy Birthday



My Country Tis' of Thee

Musical notation for the first two staves of 'My Country Tis' of Thee'. The first staff is in 3/4 time with a key signature of one flat (Bb). The second staff continues the melody. The piece concludes with a double bar line.

America the Beautiful

Musical notation for the first four staves of 'America the Beautiful'. The first staff is in 4/4 time with a key signature of one flat (Bb). The second staff contains a sharp sign (#) above the staff. The piece concludes with a double bar line.

This Land is Your Land

Musical notation for the first two staves of 'This Land is Your Land'. The first staff is in common time (C) with a key signature of one flat (Bb). The second staff continues the melody. The piece concludes with a double bar line.

Trumpet

Bingo

Musical score for 'Bingo' in 2/4 time, featuring three staves of music. The key signature has one flat (B-flat). The first staff begins with a treble clef, a 2/4 time signature, and a B-flat key signature. The melody consists of eighth and quarter notes. The second and third staves continue the melody with similar rhythmic patterns.

Rock Around the Clock

Musical score for 'Rock Around the Clock' in common time (C), featuring six staves of music. The key signature has one flat (B-flat). The first staff begins with a treble clef and a common time signature. The melody is characterized by eighth and quarter notes, with some rests. The second and third staves continue the melody, including a triplet of eighth notes. The fourth and fifth staves feature a melodic line with a slur and a fermata over a half note. The sixth staff concludes the piece with a final melodic phrase and a double bar line.

Flinstones Theme

Musical score for the Flinstones Theme, Trumpet part. The score consists of five staves of music in common time (C). The melody is written in treble clef. The first four staves contain the main melody, and the fifth staff contains a final phrase. The word "WILMA!" is written below the fourth staff.

Take Me Out to the Ball Game

Musical score for the song "Take Me Out to the Ball Game", Trumpet part. The score consists of four staves of music in 3/4 time. The melody is written in treble clef. The first staff begins with a 3/4 time signature. The melody is simple and characteristic of the song.

Trumpet

Star Wars Theme

The musical notation for the Star Wars Theme is presented in three staves. The first staff begins with a treble clef and a 4/4 time signature. It contains a triplet of eighth notes (G4, A4, B4), followed by a quarter note (C5), and then three groups of eighth notes: (D5, E5), (F5, G5), and (A5, B5). The second staff continues with a quarter note (C5), a quarter note (D5), and a triplet of eighth notes (E5, F5, G5). This is followed by a quarter note (A5), a quarter note (B5), and a first ending bracket over a quarter note (C6) and an eighth note (B5). The third staff contains a quarter note (A5) followed by a double bar line and a repeat sign.

Spongebob Squarepants

The musical notation for the Spongebob Squarepants theme is presented in three staves. The first staff begins with a treble clef and a 12/8 time signature. It starts with a quarter note (G4) with a fermata, followed by a series of eighth notes: (A4, B4, C5, D5, E5, F5, G5, A5, B5, C6, D6, E6, F6, G6, A6, B6, C7). The second staff continues with a series of quarter notes: (D5, E5, F5, G5, A5, B5, C6, D6, E6, F6, G6, A6, B6, C7). The third staff contains a quarter note (G4) with a fermata, followed by a series of quarter notes: (A4, B4, C5, D5, E5, F5, G5, A5, B5, C6).

Trumpet

Crazy Train

The image displays a musical score for the trumpet part of the song "Crazy Train". The score is written on ten staves, each beginning with a treble clef and a common time signature (C). The music is characterized by a driving, rhythmic feel, typical of heavy metal. The first staff starts with a repeat sign and a common time signature, followed by a series of eighth and quarter notes with rests. The second staff features a melodic line with a mix of eighth and quarter notes, including a sharp sign. The third staff continues the melodic development with eighth notes and a sharp sign. The fourth staff begins with a repeat sign and a common time signature, followed by a series of eighth notes and a sharp sign. The fifth staff features a melodic line with eighth notes and a sharp sign. The sixth staff continues the melodic development with eighth notes and a sharp sign. The seventh staff features a melodic line with eighth notes and a sharp sign. The eighth staff continues the melodic development with eighth notes and a sharp sign. The ninth staff features a melodic line with eighth notes and a sharp sign. The tenth staff concludes the piece with a final note and a double bar line.